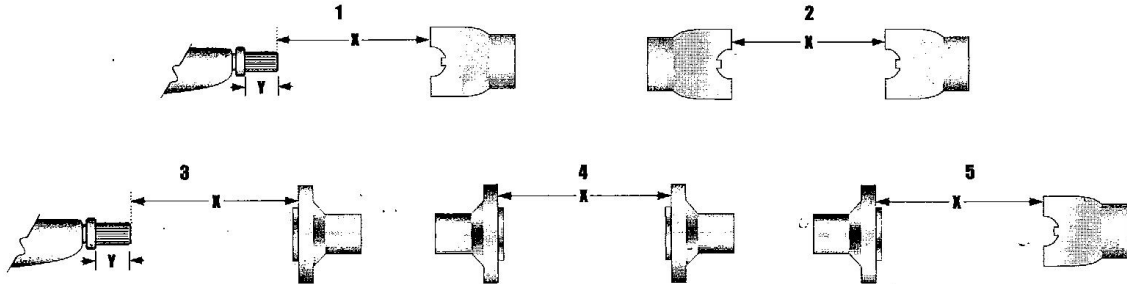


4x4 OFF ROAD DRIVESHAFT MEASUREMENTS

DETERMINE PROPER WORKING LENGTH

Select a drawing from 1 through 5 below that best represents your parts and measure the distances "X" and "Y" shown between the arrows while the vehicle is fully resting on its suspension, NOT on a "Chassis Hoist" or "On a Jack."



HANDY TIPS!

- THE VEHICLE MUST BE MEASURED AS IT IS TO OPERATE. JACKING UP THE VEHICLE WILL CHANGE YOUR DIMENSIONS.
- IF YOUR VEHICLE HAS A BOLT-ON TRANSMISSION YOKE, MEASURE BETWEEN U-JOINT CENTERLINES
- IF THERE IS A FLANGE MOUNT ON EITHER OR BOTH ENDS, MEASURE TO ITS FACE.
- WHEN YOU INSTALL U-BOLTS DO NOT OVER TIGHTEN THEM. "D" DIMENSION 1-1/16" AND 1-1/8" : 14-17 FT. LB.; 1-3/16" : 20-24 FT. LB.; 1-3/8" : 32-37 FT. LB.

INLAND EMPIRE DRIVELINE SERVICE - 800.800.0109

www.iedls.com

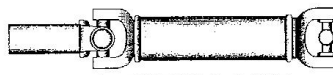
OUR PRODUCTS — P.19

4x4 OFF ROAD DRIVESHAFT MEASUREMENTS

PICK THE SHAFT THAT FITS YOUR NEEDS



TYPE A: STANDARD SLIP - 2 JOINT



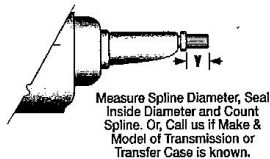
TYPE B: REVERSE SLIP - 2 JOINT



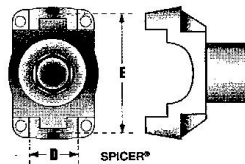
TYPE C: C-CV/DOUBLE CARDAN

DETERMINE END ATTACHMENTS REQUIRED

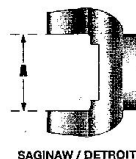
REVERSE SLIP



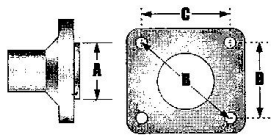
END YOKE



Measure attaching Yoke or U-Joint. Note difference between Spicer® or Saginaw and Detroit Yokes. Dimensions D, E and A Match D, E and A on U-Joints shown below.

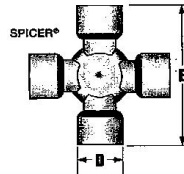


FLANGE

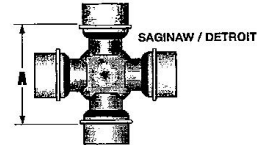


Measure Pilot Diameter "A" (Male/Female?) Bolt Circle "B", Bolt Circle "C" and "D".

U-JOINTS



Spicer® Yokes and U-Joints dimension "E" equals distance between centering lugs or length of U-Joint. Saginaw/Detroit Yokes and U-Joint dimension "A" equals inside span of Yoke or distance between Snap Rings outside edge.



P.18 — OUR PRODUCTS

www.iedls.com

INLAND EMPIRE DRIVELINE SERVICE - 800.800.0109